



Dear Parents and Carers,

Firstly, we would like to take this opportunity to welcome all our new parents and carers to Learning Corner Nursery and for all our returning families.

Please read the newsletter for all Autumn Term nursery updates.



CHILDHOOD ILLNESS AND INFECTION CONTROL

If you or your child show symptoms of childhood illness, such as

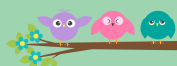
- Influenza.
- Bronchitis.
- RSV.
- Hand, Foot, and Mouth Disease.
- Conjunctivitis.
- Gastroenteritis.



It is extremely important that the nursery is notified via telephone so that the correct guidance to keep every individual safe is followed through effectively and for the nursery to manage infection control.

If you have any queries regarding any of the above, please do not hesitate to contact the Nursery.

Thank you all for your continuous support



STAFF

Our Nursery Manager is **Nabeela Taj.**

Our Deputy Manager/Baby Room Lead is **Ateyah Hussain.**

Our Preschool Room Lead is **Sharma Miah.**

Our Toddler Room Lead is **Hannah Khan.**

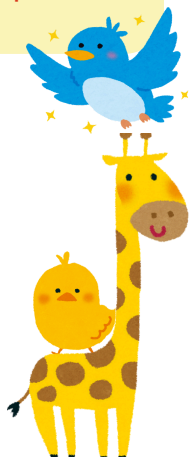




APPROPRIATE CLOTHING AND NAPPIES

Please ensure that you send your child in appropriate clothing. Layers are ideal as we play outside whatever the weather conditions.

Appropriate shoes/boots, coats, hats, gloves and scarf must be provided. May we also remind you to name your child's belongings and send in a spare set of clothes for your child's peg as we have a very limited amount of spare clothes in the Nursery. **Nappies and wipes need to be provided by parents.**



FIRST FEW WEEKS AND SETTLING IN

For the first few weeks of this term, we will be learning about ourselves and concentrating on settling all children into nursery. We will then plan activities daily in line with the children's interests. Remember, if your child is new to nursery or returning, being at nursery with the routine and all the lovely toys can be distracting, there is so much to do so children will often have toileting accidents just while they settle into nursery life. Please try not to worry. Please put your child in warm clothes as the weather is changing.



REMINDERS

- If your child is off sick or on holiday, please phone or email the nursery. We do monitor children's attendance.
- It is very important that if someone else is collecting your child you tell a member of staff. Staff will not let your child go with anyone we do not recognise

DATES FOR THE DIARY

Harvest Festival: 6th -10th October 2025
Mental Health week: 13th to 17th October 2025
Diwali: 20th October 2025
October Half Term: 27th-31st October 2025
Monster party: 4th November 2025
Parents Evening: 10th December 2025
Christmas Party 17th December 2025.
Christmas Holidays 19th December to 2nd January 2026